






# Baltimore City Health Department HIV/STD Prevention Update

*Adena Greenbaum, Assistant Commissioner of  
Clinical Services  
May 15, 2018*



*Catherine E. Pugh*  
Mayor, Baltimore City

*Leana S. Wen, M.D., M.Sc.*  
Commissioner of Health, Baltimore City

@Bmore\_Healthy   
@DrLeanaWen   
BaltimoreHealth 

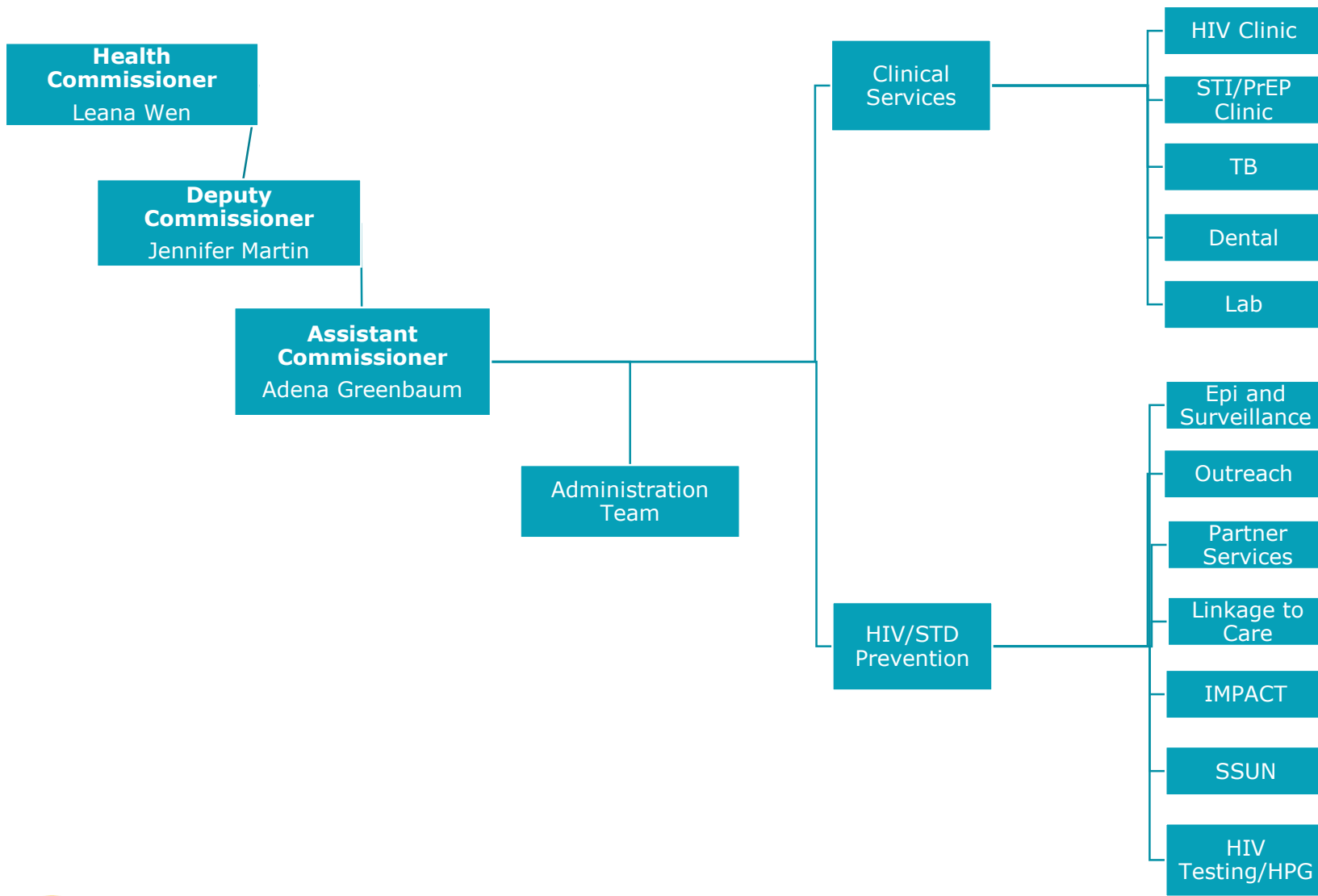
*health.baltimorecity.gov*

# New Faces



*Catherine E. Pugh*  
Mayor, Baltimore City

*Leana S. Wen, M.D., M.Sc.*  
Commissioner of Health, Baltimore City



*Catherine E. Pugh*  
Mayor, Baltimore City

*Leana S. Wen, M.D., M.Sc.*  
Commissioner of Health, Baltimore City



# Clinical Services: HIV Clinic

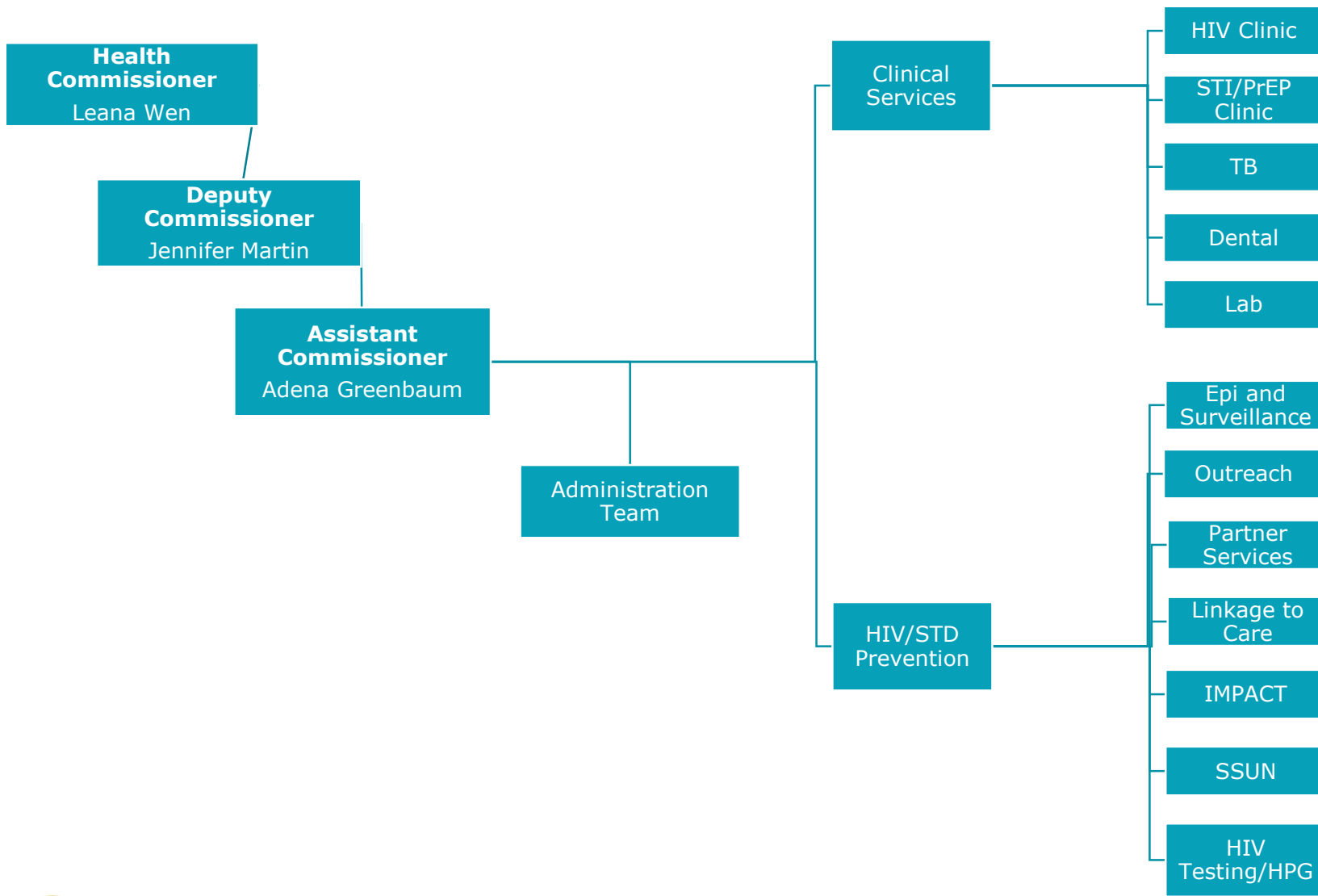
- 300+ HIV patients
- Dr. Amanda Rosecrans, Medical Director
- Integrated with STD clinic, PrEP program, partner services, new mobile van
- Integrated Hep C treatment, buprenorphine treatment
- Close relationship with BCHD Dental clinic
- HIV Directly Observed Therapy (DOT)



*Catherine E. Pugh*  
Mayor, Baltimore City

*Leana S. Wen, M.D., M.Sc.*  
Commissioner of Health, Baltimore City

**BALTIMORE  
CITY HEALTH  
DEPARTMENT**



*Catherine E. Pugh*  
Mayor, Baltimore City

*Leana S. Wen, M.D., M.Sc.*  
Commissioner of Health, Baltimore City

# HIV/STD Programs

- Epidemiology and Surveillance
  - SSuN (STD Surveillance Network)
- Outreach
- HIV Testing Program
- Linkage to care
- Partner Services (DIS)
- IMPACT
  - PrEP
  - Social innovation: Baltimore in Conversation, Project Presence

HIV Planning  
Group and  
Commission  
(HPG)



*Catherine E. Pugh*  
Mayor, Baltimore City

*Leana S. Wen, M.D., M.Sc.*  
Commissioner of Health, Baltimore City

 **BALTIMORE  
CITY HEALTH  
DEPARTMENT**

# Outreach

- Van
  - 33 sites
  - 17 added April 2018
- Events
  - 4-5 health fairs per month, 10 in summer
  - Gay Pride, Caribbean Festival, Artscape
- Host Events
  - Know Your Status Ball



*Catherine E. Pugh*  
Mayor, Baltimore City

*Leana S. Wen, M.D., M.Sc.*  
Commissioner of Health, Baltimore City

 **BALTIMORE  
CITY HEALTH  
DEPARTMENT**

# BCHD HIV Testing Program

		Number of HIV Tests 2016	Number of HIV Tests 2017
Clinical	Emergency Departments	28,415 (52%)	22,669 (42%)
	Inpatient Facilities	--	6,170 (11%)
	BCHD STD Clinics	7,060 (13%)	7,194 (13%)
	Other Clinical Settings*	6,177 (13%)	7,671 (14%)
Non-Clinical	BCHD Outreach and Syringe Exchange	6,571 (12%)	5,942 (11%)
	Non-clinical CBOs	6,177 (11%)	4,224 (8%)
<b>Total</b>		<b>55,163</b>	<b>53,870</b>

\*Community Health Centers, FQHCs, Substance Abuse Treatment Centers



Catherine E. Pugh  
Mayor, Baltimore City

Leana S. Wen, M.D., M.Sc.  
Commissioner of Health, Baltimore City





# BCHD HIV Testing Program: HIV Positivity

	2016		2017	
Type of Setting	Total HIV Tests (n)	Positive tests (n, %)	Total HIV Tests (n)	Positive tests (n, %)
<b>Clinical</b>	42,415 (76%)	322 (0.8%)	43,704 (81%)	280 (0.6%)
<b>Non-clinical</b>	12,748 (23%)	229 (1.8%)	10,166 (19%)	158 (1.6%)
<b>Total</b>	55,163	<b>551 (1.0%)</b>	53,870	<b>438 (0.8%)</b>



Catherine E. Pugh  
Mayor, Baltimore City

Leana S. Wen, M.D., M.Sc.  
Commissioner of Health, Baltimore City



# BCHD HIV Tests: HIV Positivity

	2016		2017	
Type of Setting	Total HIV Tests (n)	Positive tests (n, %)	Total HIV Tests (n)	Positive tests (n, %)
<b>Clinical</b>	42,415 (76%)	322 (0.8%) (58% of positives)	43,704 (81%)	280 (0.6%) (60% of positives)
<b>Non-clinical</b>	12,748 (23%)	229 (1.8%) (42% of positives)	10,166 (19%)	158 (1.6%) (40% of positives)
<b>Total</b>	55,163	<b>551 (1.0%)</b>	53,870	<b>438 (0.8%)</b>



Catherine E. Pugh  
Mayor, Baltimore City

Leana S. Wen, M.D., M.Sc.  
Commissioner of Health, Baltimore City



# BCHD HIV Tests: New Diagnoses

	2016	2017
Number of HIV Tests	55,163	53,870
Total HIV Positive	551 (1.0% positivity)	438 (0.8% positivity)
New HIV Positive Diagnoses	189 (34% of all positives, 0.3% of all tests)	145 (33% of all positives, 0.3% of all tests)
Linkage to Care	134 (71% of new diagnoses)	99 (68% of new diagnoses)
Partner Service Interview	120 (63% of new diagnoses)	83 (57% of new diagnoses)

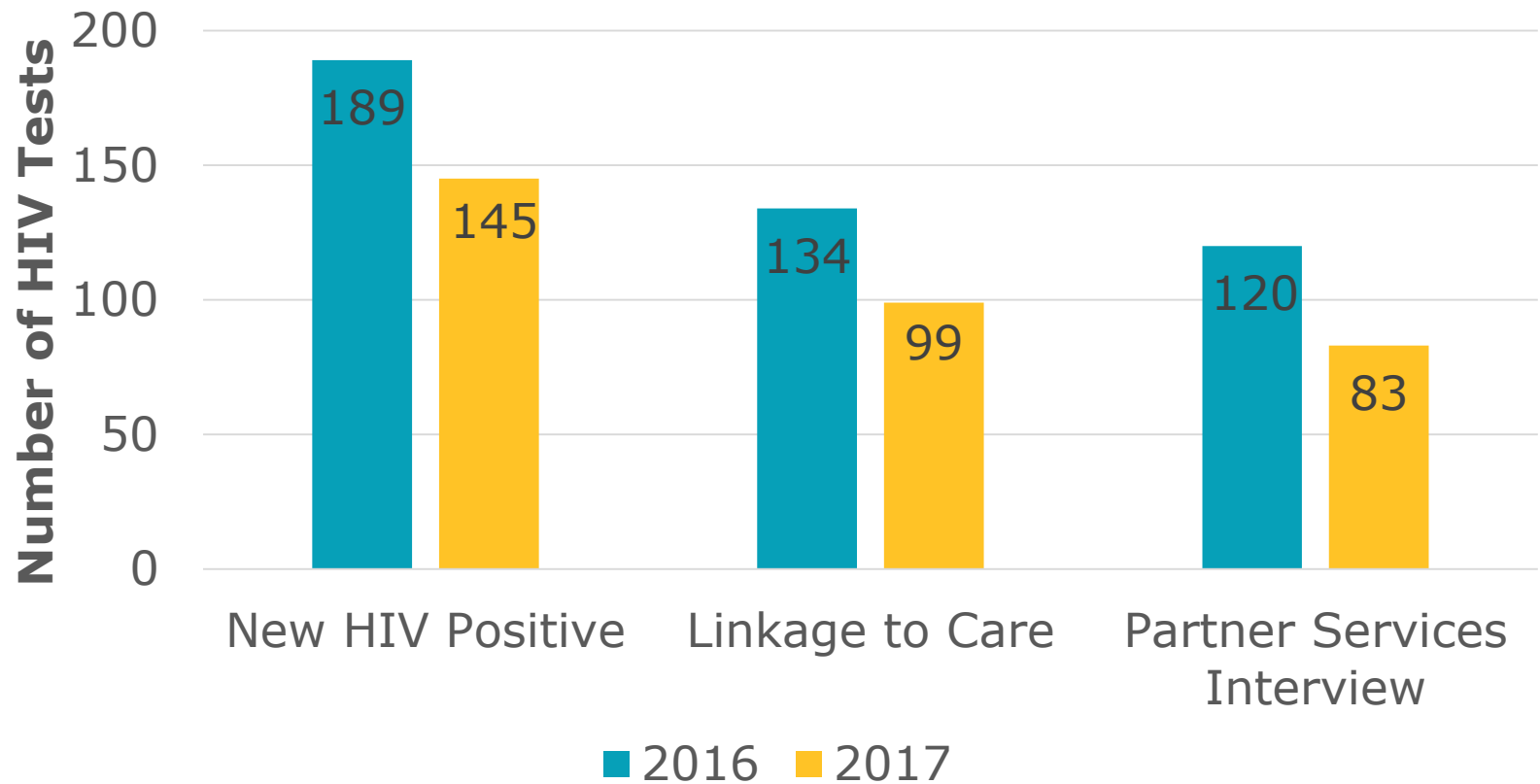


*Catherine E. Pugh*  
Mayor, Baltimore City

*Leana S. Wen, M.D., M.Sc.*  
Commissioner of Health, Baltimore City



# BCHD HIV Tests: New Diagnoses



*Catherine E. Pugh*  
Mayor, Baltimore City

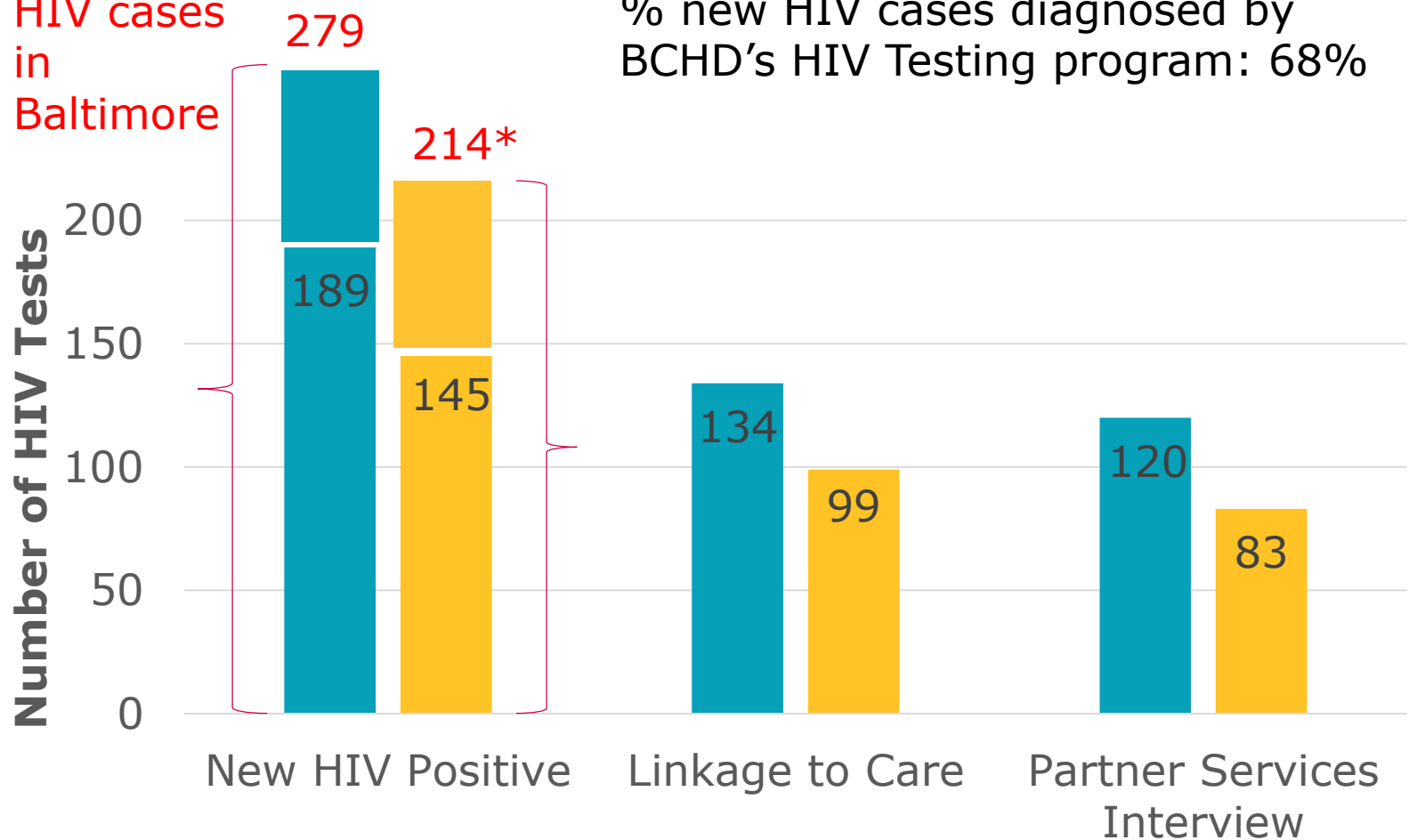
*Leana S. Wen, M.D., M.Sc.*  
Commissioner of Health, Baltimore City



# BCHD HIV Tests: New Diagnoses

Total new HIV cases in Baltimore

% new HIV cases diagnosed by BCHD's HIV Testing program: 68%



Catherine E. Pugh  
Mayor, Baltimore City

Leana S. Wen, M.D., M.Sc.  
Commissioner of Health, Baltimore City

■ 2016 ■ 2017

\*2017 total HIV cases preliminary data



# Partner Services

- DIS interview of all new HIV positive patients
- Goal is to identify partners, notify them to get tested
- Ensure patients linked to care
- (Treatment verification)

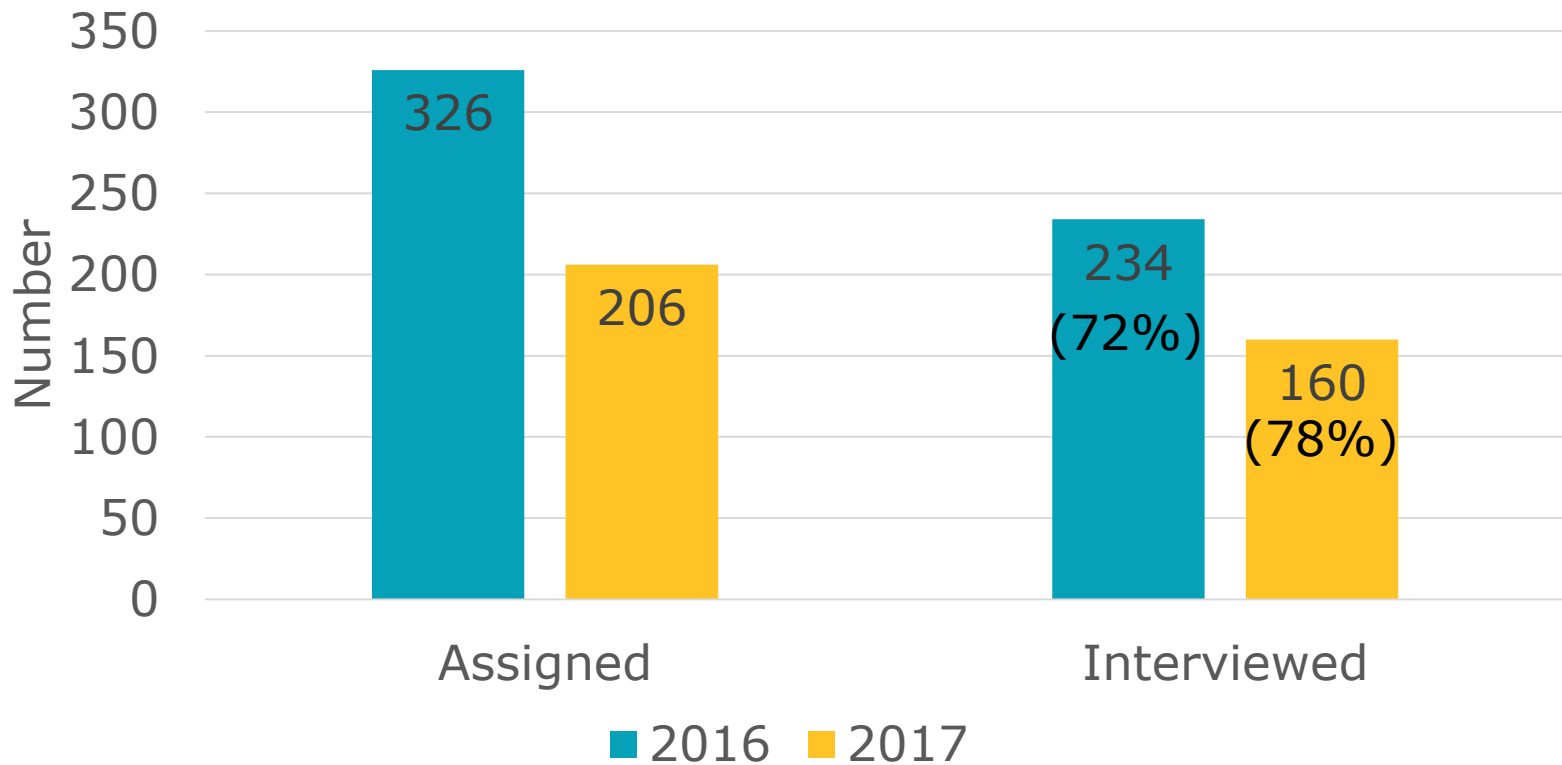


*Catherine E. Pugh*  
Mayor, Baltimore City

*Leana S. Wen, M.D., M.Sc.*  
Commissioner of Health, Baltimore City

 **BALTIMORE  
CITY HEALTH  
DEPARTMENT**

# Percent new HIV positive patients interviewed by DIS, 2016-2017



*Catherine E. Pugh*  
Mayor, Baltimore City

*Leana S. Wen, M.D., M.Sc.*  
Commissioner of Health, Baltimore City



# New HIV positive patients interviewed by DIS, 2016-2017

	2016	2017
New HIV Diagnoses	326	206
New HIV Diagnoses Interviewed	234 (72%)	160 (78%)
Partners Interviewed	176	103
Partners Unable to Locate	33	14



*Catherine E. Pugh*  
Mayor, Baltimore City

*Leana S. Wen, M.D., M.Sc.*  
Commissioner of Health, Baltimore City





# Linkage

- HIV linkage started in 2005
  - HCV started in Feb 2016
- 8 Linkage to Care Investigators
- “DIS model” to record search
- Transport to clients to two appointments
- Same day appointments
  - BCHD, Bartlett, UMD, HCH, Jai, Total Health Care
- HIV clients who have never been in care or ‘out of care’ (6 months)



*Catherine E. Pugh*  
Mayor, Baltimore City

*Leana S. Wen, M.D., M.Sc.*  
Commissioner of Health, Baltimore City

 BALTIMORE  
CITY HEALTH  
DEPARTMENT

# Linkage to Care

	2016	2017
Successfully linked	85 (24%)	106 (19%)
Attempted link	26 (7%)	41 (7%)
Already in Care	32 (9%)	106 (18%)
Unable to Locate	143 (40%)	219 (38%)
Other	64 (18%)	100 (18%)
<b>Total</b>	<b>350</b>	<b>570</b>



*Catherine E. Pugh*  
Mayor, Baltimore City

*Leana S. Wen, M.D., M.Sc.*  
Commissioner of Health, Baltimore City

## PrEP Locator Find Your Provider

[About Us](#) [About PrEP](#) [Locator Data](#) [FAQ](#) [Add Provider](#) [Add Locator To Your Site](#) [Contact](#)

Baltimore, Maryland 

PrEP for uninsured

PrEP access assistance

**Planned Parenthood of Maryland Incorporated**  
330 N Howard St  
Baltimore, MD 21201  
(410) 576-1414  
Distance from your location: 0.47 miles

**University of Maryland Medical Center**  
77 C Greene St  
Baltimore, MD 21201  
(410) 328-9790  
Distance from your location: 0.70 miles

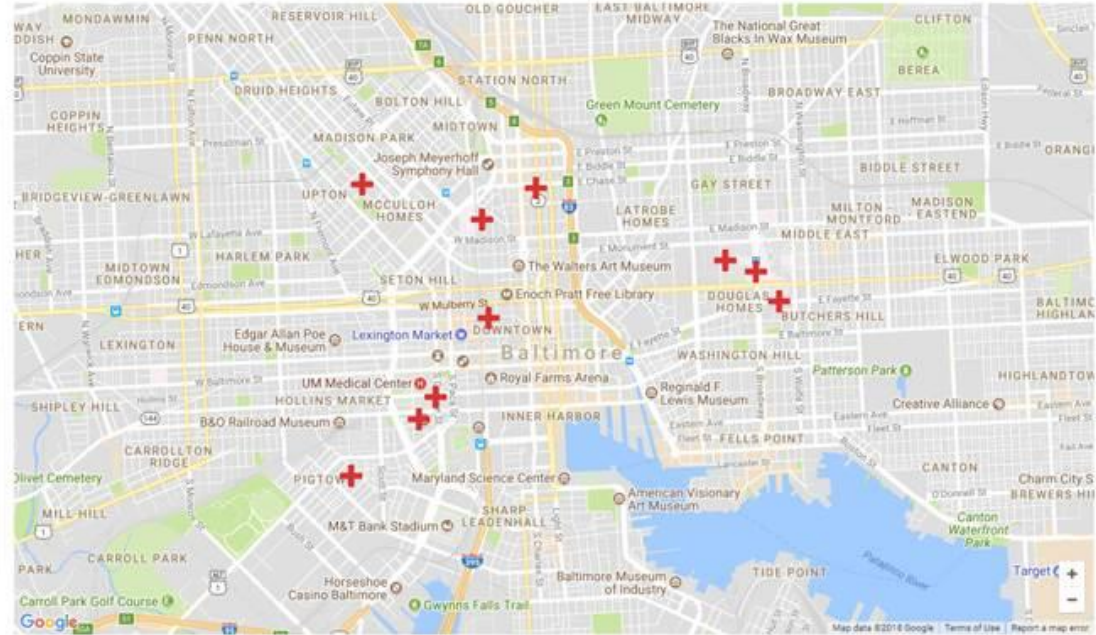
**University of Maryland Medical School**  
120 Penn St  
1st Fl  
Baltimore, MD 21201  
(410) 328-8336  
Distance from your location: 0.81 miles

**University of Maryland Medical Center**  
300 Armory Pl  
First Floor  
Baltimore, MD 21201  
(410) 222-8083  
Distance from your location: 0.84 miles

**Chase Brexton Health Care**  
1111 N Charlec St  
Bldg A  
Baltimore, MD 21201  
(410) 837-2050  
Distance from your location: 0.88 miles

[Add PrEP Locator to Your Site](#)

[Suggest a provider for the directory](#)



CREATED BY:  EMORY UNIVERSITY 

[Suggest a Provider](#) | [Privacy Policy](#) | [Terms of Use](#)

This webpage wants to run the following add-on: Citrix ICA Client Object (ActiveX Win32) from Citrix Systems, Inc. [What's the risk?](#)



*Catherine E. Pugh*  
Mayor, Baltimore City

*Leana S. Wen, M.D., M.Sc.*  
Commissioner of Health, Baltimore City



# PrEP at BCHD

- 6 clinical sites (Chase Brexton, Jaques, STAR TRACK, Bartlett, Harriet Lane, BCHD)
- 2 CBOs (GLCCB, AIDS Action)
- Outreach, referrals, PrEP

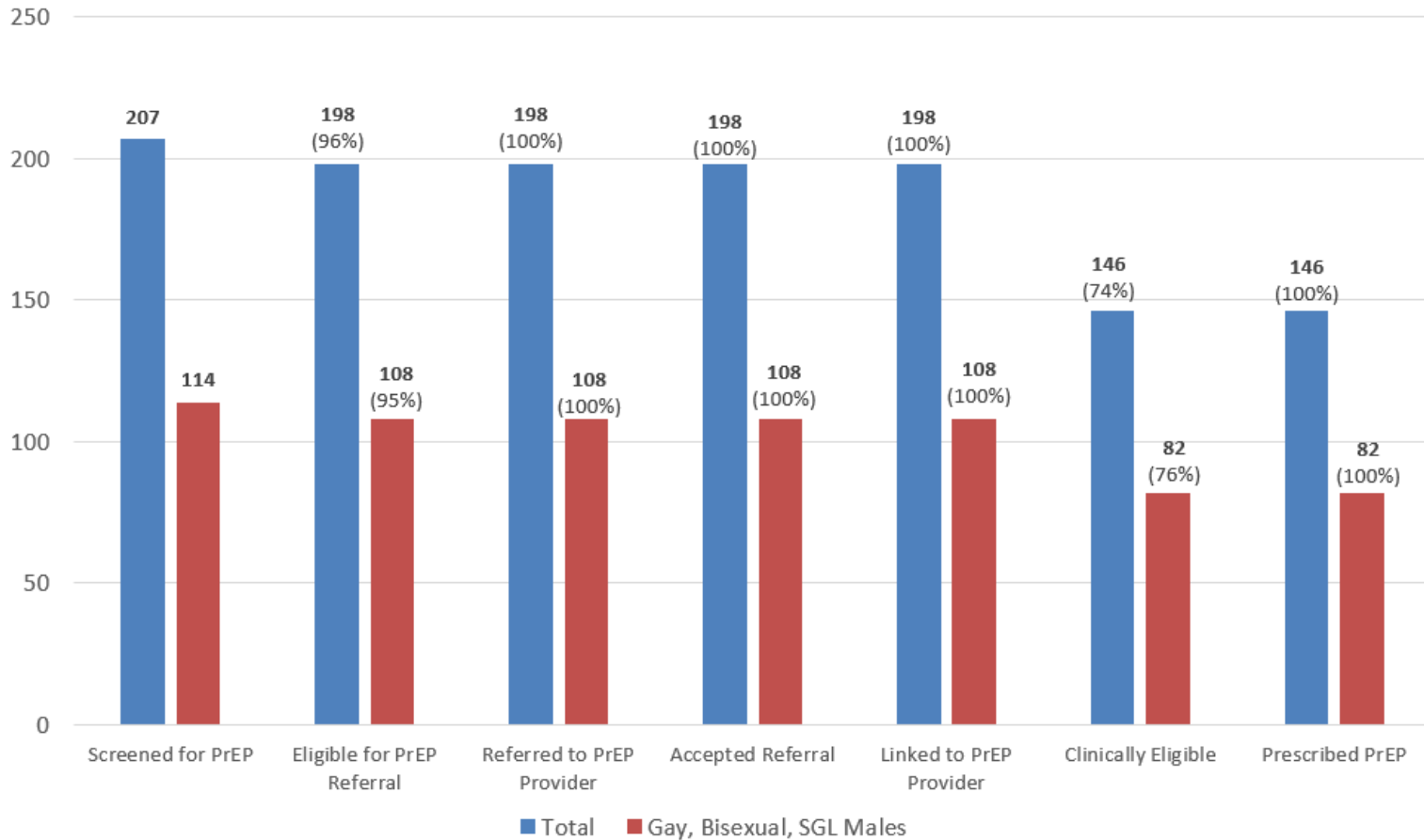


*Catherine E. Pugh*  
Mayor, Baltimore City

*Leana S. Wen, M.D., M.Sc.*  
Commissioner of Health, Baltimore City

 **BALTIMORE  
CITY HEALTH  
DEPARTMENT**

# PrEP Cascade for IMPACT Baltimore, Sept 2015 to Mar 2018, Five Clinical Sites (n=207)



Catherine E. Pugh  
Mayor, Baltimore City

Leana S. Wen, M.D., M.Sc.  
Commissioner of Health, Baltimore City



(note: only includes those individuals with complete information as of 4/1/2018; Cascade not yet available for

Sat, June 2<sup>nd</sup>  
3-7 PM  
MICA



*Catherine E. Pugh*  
Mayor, Baltimore City

*Leana S. Wen, M.D., M.Sc.*  
Commissioner of Health, Baltimore City



# Areas for growth

TRUST

STIGMA

- Efficiency of outreach/testing
- Linkage and Partner Services
- PrEP
- U=U
- Social media (education, outreach, DIS)



*Catherine E. Pugh*  
Mayor, Baltimore City

*Leana S. Wen, M.D., M.Sc.*  
Commissioner of Health, Baltimore City

 **BALTIMORE  
CITY HEALTH  
DEPARTMENT**

# Thank you



*Catherine E. Pugh*  
Mayor, Baltimore City

*Leana S. Wen, M.D., M.Sc.*  
Commissioner of Health, Baltimore City

 **BALTIMORE  
CITY HEALTH  
DEPARTMENT**