

Behavioral Health Assessments Review

May 15, 2018

Ryan White HIV/AIDS Part A/MAI
Baltimore City Health Department



Objectives



- To answer the following questions:
 - Are all Medical Case Management and Non-Medical Case Management sub-recipients assessing behavioral health issues with clients during the intake process?
 - What type of behavioral health questions are asked in the assessment?
 - Are all clients screened? How are clients referred to mental health treatment? How are clients referred to substance abuse treatment?
 - How often are clients re-assessed?

Methods

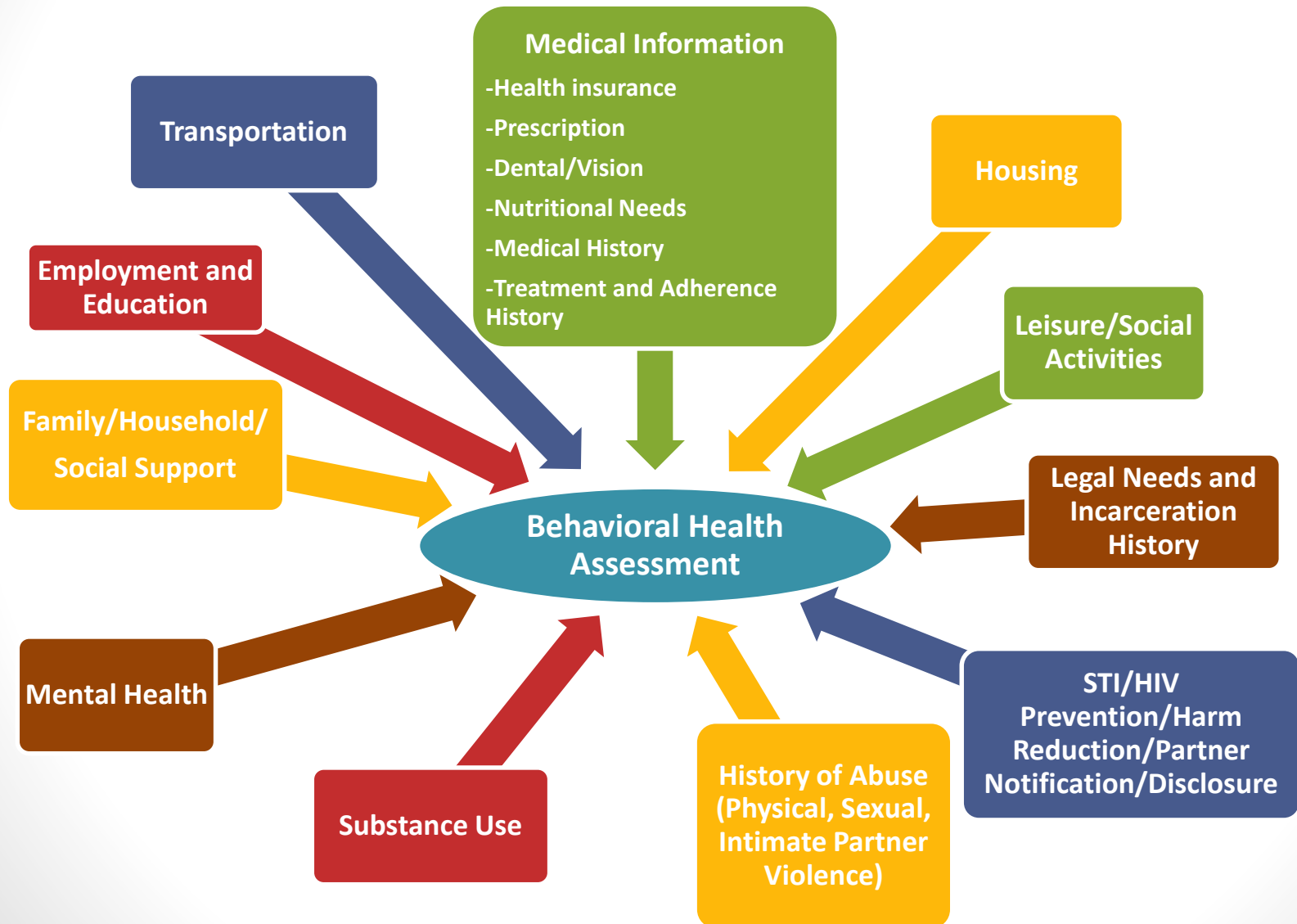


- Contacted all Medical Case Management and Non-Medical Case Management sub-recipients and requested:
 - A copy of agency's most recent behavioral health assessment/screening tool
 - A copy of the protocol or a description that includes the following:
 - Indicating if every client is screened or if screening is under the discretion of the case manager/staff member
 - The overall process once a client has been screened and presented with a mental health and substance abuse issue
 - When the screening takes place, who conducts it, and how often clients are reassessed

Evaluation of Behavioral Health Issues

Question	Answer
Are Ryan White Part A Medical Case Management and Non-Medical Case Management sub-recipients evaluating behavioral health issues in their assessment tools?	17 out of the 17 MCM/NMCM sub-recipients evaluate behavioral health issues in their tools

Questions Asked in Behavioral Health Assessments



Other Questions Asked in Behavioral Health Assessment

Participation in
Clinical Trials

Use of
Complementary/
Alternative
Therapies

Home Care Use or
Needs

Challenges related to
gender identification
and sexual
orientation

In-Depth Adverse
Childhood
Experiences
Inventory

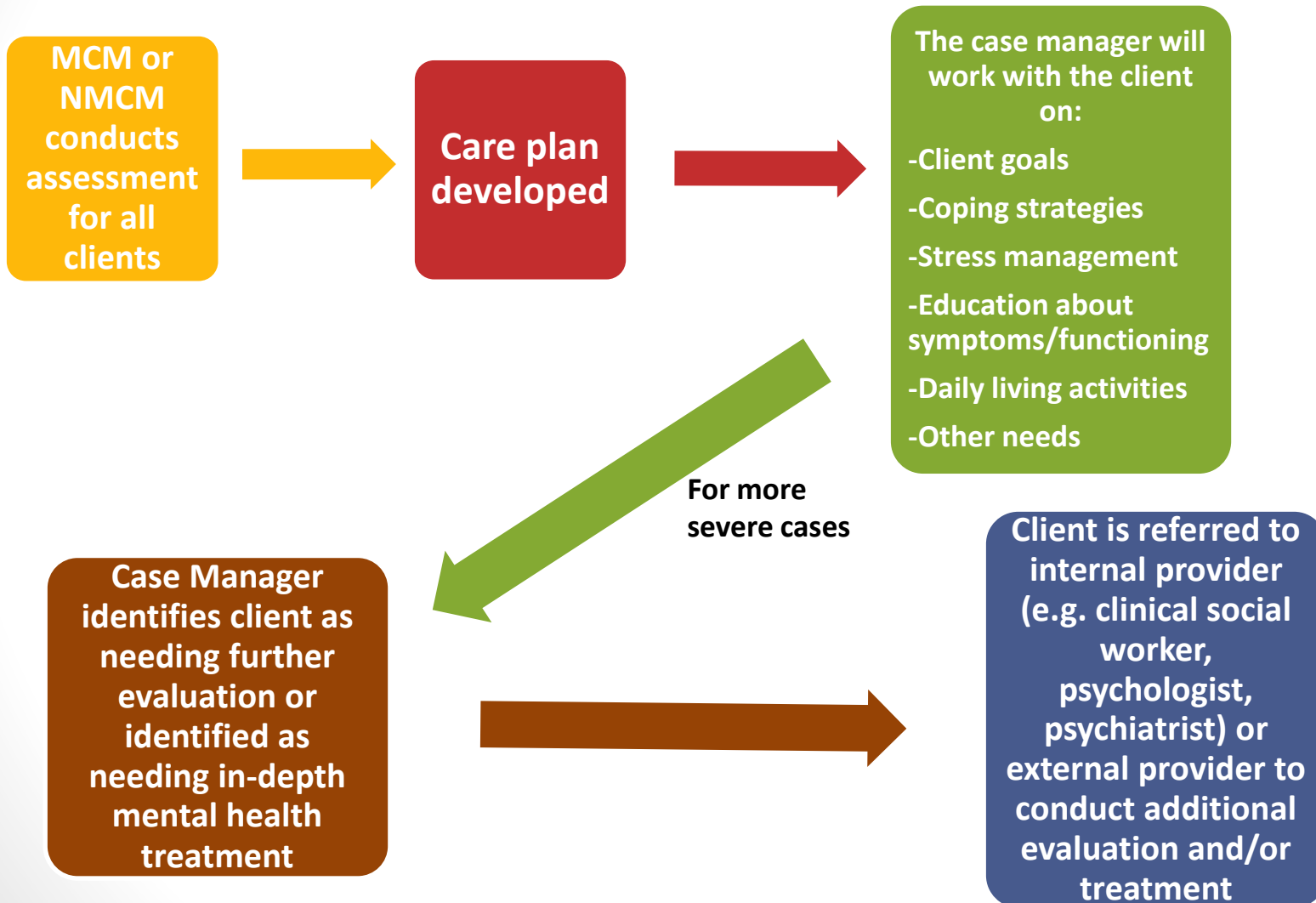
Other Trauma

- Natural disasters
- Fires
- Serious Accidents
- Exposure to combat or war zone
- Exposure to “severe human suffering”
- Sudden or unexpected death

Learning Preferences
Survey—Client
learning style (visual,
verbal, or physical)

Gambling Issues

How Are Clients Referred Mental Health Treatment?



How are Clients Referred to Substance Abuse Treatment?



How Often are Clients are Reassessed?

MCM and NMCM clients are reassessed within six months

Contact Info



Lauren D. Wagner, PhD, MS

Deputy Director of Clinical Quality Management

Ryan White Part A/MAI Program

Baltimore City Health Department

lauren.wagner@baltimorecity.gov

(410) 396-1408